

DLD Client

User Manual

Version 0.8
February 2007

Table of Contents

Checking the volume settings prior to recording.....	3.
Checking the volume settings prior to recording (cont.....)	4
Starting the DLD Application.....	4
Checking the lecture details.....	5
Amending the lecture details.....	6
Recording.....	7.
Pausing and Resuming recording.....	7
Finishing recording.....	7
Contacts for help.....	8
DLD client application - issues in the lecture theatre.....	8
All other DLD system inquiries.....	8

Checking the volume settings prior to recording

1. Retrieve the Radio Microphone from the draw, or lectern cupboard using the green key.
2. Turn the Radio Microphone on and attach it to your person. (Make sure the display on the Radio Microphone contains values. If it remains blank when switched on the batteries are most likely flat, and will need replacing. Use a spare AA battery.)
3. Launch the Windows (tm) sound recorder application:
(START menu -> Accessories -> Entertainment -> Sound Recorder)

4. You will see the following window.



This is not the DLD application, this is just for testing the audio setup.

5. Click on the red record button.
6. Begin talking into the microphone.

Illustration 1: Windows Sound Recorder

You should see a wave pattern appear. The following two figures show wave patterns that will produce an acceptable recording: (Note that the volume in illustration 3 is getting a bit too low).



Illustration 3: Microphone volume just right.



Illustration 2: Microphone volume too low.

Even amplification this low will sound ok through DLD.

If the wave is so high as to be cut off, then this indicates that the microphone volume is too loud and a distorted recording will result. As shown:



Illustration 4: Microphone volume level too high.

If the wave peaks are hardly visible as in Illustration 2, or not at all as in Illustration 1, it means that the microphone volume is too low, and the recording will hardly be audible, or not at all through the DLD system.

Checking the volume settings prior to recording (cont...)

If the wave sample is in range as described in point 6 (Illustration 3) then the microphone is setup correctly. Close down the sound recorder (don't save the file), then you can begin using the DLD client application (See below). Otherwise report the situation to the DOI helpdesk so that they can assist you. The DOI helpdesk extension is 59666. Press '1' to indicate a DLD (lecture room) problem.

Starting the DLD Application

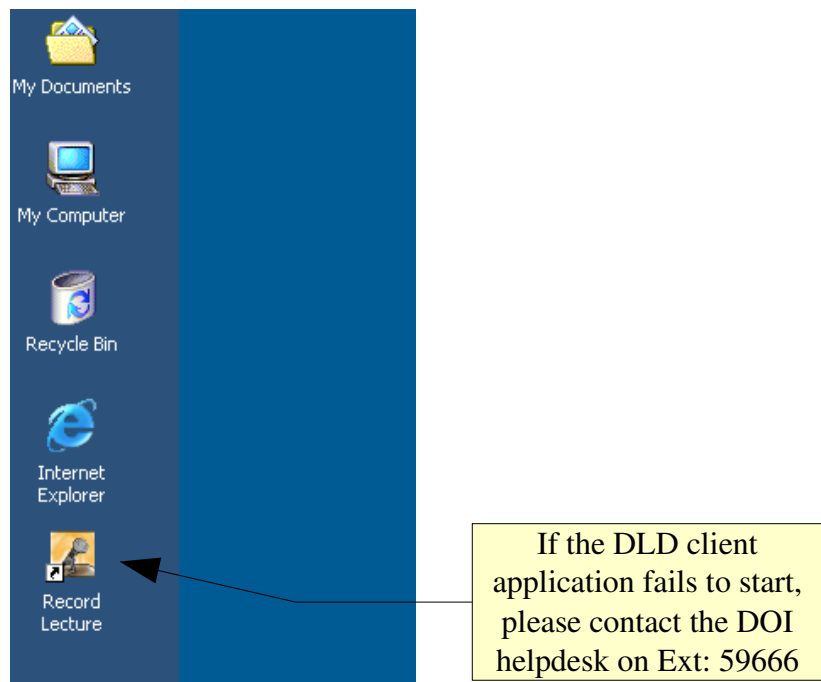


Illustration 5: Icon for the DLD Recording Client on the PC Desktop.

Start the DLD application by double clicking the desktop icon called 'Record Lecture' .

Checking the lecture details

You will be presented with the DLD client's first screen, and correct details should be filled out for you.

If not, the system has incorrect or missing timetable data, please read the next section for instructions on adding your course code manually.

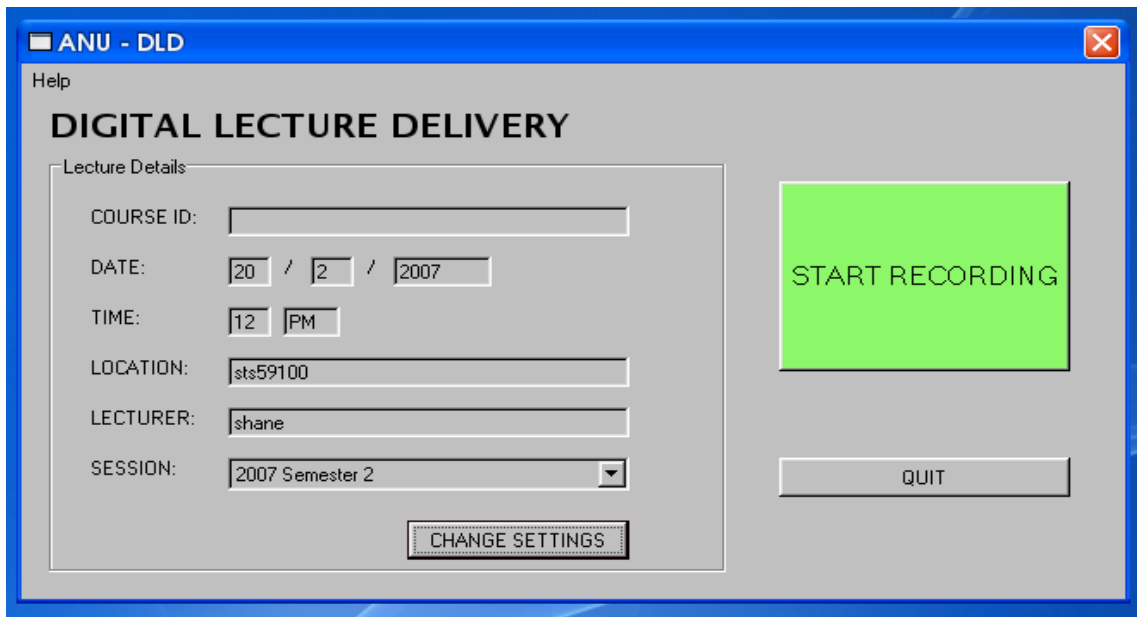


Illustration 6: Once the DLD client has started, this is the first screen.

When run during a scheduled lecture, the course code will appear here automatically. If not, please read the next section for instructions on adding your course code manually.

Amending the lecture details

If you are running the DLD application at the time of a scheduled lecture, the COURSE ID: field should contain the appropriate course code. Otherwise it means that the course code was not available, and in these circumstances clicking the CHANGE SETTINGS button will allow you to type in the appropriate course code, as pictured below. (Note that in the following screen shot, the CHANGE SETTINGS button has already been clicked.)

NEW SESSION FIELD: The client has a new SESSION field, please specify which session the recording is meant for so that WebCT can determine the correct site in which to list it.

Note: the course code, not the course name, must be entered.

Click these question marks for further information about the field on it's left.

ANU - DLD

Help

DIGITAL LECTURE DELIVERY

Lecture Details

COURSE ID: ?

DATE: / /

TIME:

LOCATION:

LECTURER: ?

SESSION: ?

START RECORDING

QUIT

New session field

Illustration 7: The 'CHANGED SETTINGS' button has been clicked, allowing you to edit the recording details.

Recording

Once you press the big green START RECORDING button as seen on page 5, you will be presented with the following window.

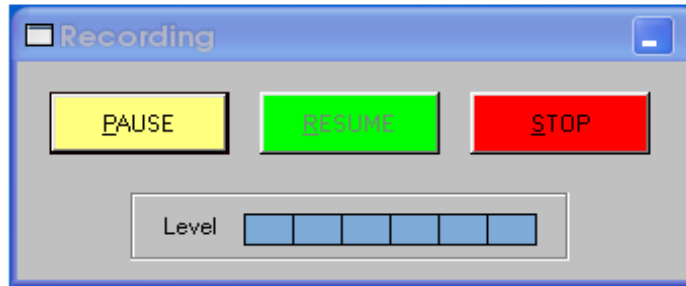


Illustration 8: This screen appears when the DLD client is recording.

Pausing and Resuming recording

Use the pause and resume buttons to control recording. The screen will not change, apart from the buttons being grayed out, or made active, depending on what you are doing.



Illustration 9: The client has been paused here. Click resume to continue.

Finishing recording

Once you have finished recording, click the STOP button. You will then see the following window.

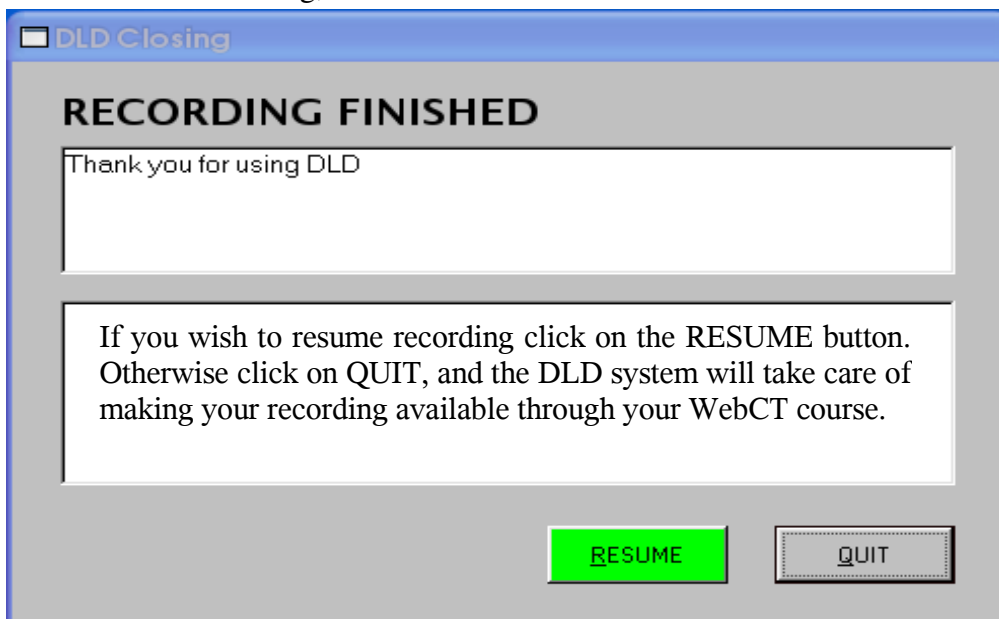


Illustration 10: When you stop the Client using the 'STOP' button, you will see this final screen. You can quit the client, or resume recording.

Contacts for help

DLD client application -issues in the lecture theatre

All issues when using the DLD client application in a lecture theatre should be directed to the DOI help desk on Ext: 59666. The type of issues include:

- DLD client application not starting correctly
- DLD client application errors
- Microphone issues

Once the system picks up your 59666 call, Press 1 straight away to indicate that your issue is related to DLD. The operators who pick up the '1' option calls, know that your call will be about DLD and they are the best people to help you regarding DLD.

All other DLD system inquiries

For inquiries where time is not critical, please email:

dldhelp@anu.edu.au

DLD Help – direct queries to this email when you need help regarding subjects like:

- Training for the DLD system
- Setting up WebCT access to the recorded lectures
- Silent recordings
- Problems encountered by students